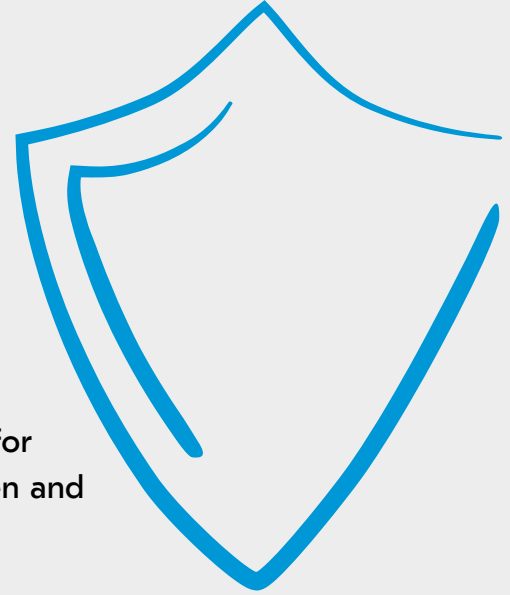


Smart, secure, and sustainable



Enjoy low running costs and high-quality prints with the ECOSYS PA2600cx/ECOSYS PA2600cwx. This is the ideal desktop printer for small companies and home workers. It has an intuitive touch screen and cutting-edge security features to optimise workflows.



ECOSYS PA2600cx/ PA2600cwx

Print speeds up to 26 ppm

**AirPrint, Mopria and Kyocera
Mobile Print capabilities**

**Direct printing from USB flash
memory devices**

Specifications

GENERAL

KYOCERA ECOSYS Laser Colour Printer

Operation panel: Colour 2.7inch TFT

Type: Desktop

Engine speed:

Up to 26 A4 pages per minute simplex (single-sided),

Up to 13 A4 pages per minute duplex (both sides)

Resolution: 1200 x 1200 dpi

Recommended Print Volume¹:

Average 900 images per month

Maximum Print Volume²: 65,000 pages per month

Maximum Life³: 100,000 pages or 5 years

Warm-up time: Approx. 29 seconds or less (after switching on)

Time to first print: Approx. 9.5/10.5 seconds or less

b/w/colour

CPU: ARM Cortex-A53 single core 1.0GHz

Memory: Standard 1 GB

Standard interfaces: USB 2.0 (Hi-Speed), Network (10BASE-T/100BASE-TX/1000BASE-T), WLAN (802.11a/b/g/n/ac, Wi-Fi Direct, 2.4/5 GHz)², USB host for USB flash memory, IC Card Reader, slot for optional SD/SDHC card

Integrated accounting: 20 department codes

Dimensions (W x D x H):

Without packaging: 410 x 410 x 329 mm,

With packaging: 596 x 571 x 459mm

Weight: Without packaging:

Approx. 22 kg (with bundled toner)

Approx. 21 kg (without bundled toner)

With packaging: 28 kg

Power source: AC 220 ~ 240 V, 50/60 Hz

Power consumption:

Printing: 375 W

Ready mode: 33 W

Sleep-mode: 0.3 W

Noise (sound pressure level: ISO 7779/ISO 9296):

Printing: 49 dB(A)

Quiet mode: 44 dB (A)

Stand-by: 30 dB(A)

Safety standards: TÜV/GS, CE

This unit is manufactured according to ISO 9001 quality standard and ISO 14001 environmental standard.

PAPER HANDLING

All paper capacities quoted are based on paper thickness of max. 0.11 mm. Please use paper recommended by KYOCERA under normal environmental conditions.

Input capacity: Multi-purpose tray: 50 sheets, 60–220 g/m²,

A6, A5, A4, custom (70 × 148 – 216 × 356 mm),

Standard universal paper cassette: 250 sheets, 60–163 g/m²,

A6, A5, A4, custom (100 × 148 – 216 × 356 mm),

Max. input capacity with options: 550 sheets.

Duplex: Standard duplex unit, two-sided printing, 60–120 g/m², A5, A4, custom (140 × 210 – 216 × 356 mm).

Output capacity: Max. 150 sheets (face-down)

PRINT FUNCTIONS

Controller language: PRESCRIBE

Emulations: PCL 6 (5c, XL), KPDL3 (PostScript 3 compatible),

PDF Direct Print 1.7, 2.0, XPS/Open XPS Direct Print,

TIFF Direct Print

Operating systems: All current Windows operating systems, MAC OS X Version 10.9 or higher, Chrome OS, as well as other operating systems on request

Fonts/barcodes: 93 outline fonts (PCL6, KPDL3), 4

fonts (Calibri), 4 fonts (Cambria), 1 Bitmap font, 45 one-dimensional barcodes (e.g. EAN-8, EAN-13, EAN-128), as well as support for two-dimensional barcodes PDF417 under PRESCRIBE (PCL and other barcodes available an option)

Print features: "Proof and hold"³, Job storage³, Quick

copy², Private print², Data storage method with PIN code

or password², Internet printing IPP 1.0, E-mail printing,

WSD Print, EcoPrint - toner save mode, AirPrint, Mopria,

Microsoft Universal Print, Job batch output, Kyocera Image

Refinement, Pull print, VPSX, IPP PIN Print, Kyocera Cloud

Access, optional Kyocera Cloud Print and Scan, Secure

Boot, Run-time Integrity Check, Allowlisting, TLS 1.3,

IPSec, HTTPS, SNMPv3, S/MIME, encrypted PDF direct

printing, Security Watermark, electronic PDF signature,

IPP over TLS, WSD, local and network authentication,

Windows authentication (NTLM v2, Kerberos), Restriction

of the user group through user login administration, IP

filtering, port number restriction, blocking of interfaces,

Security Quick Setup, Administrator Authentication on

Firmware Update, SIEM Support (SysLog), SCEP, OCSP/

CRL, optional TPM (Trusted Platform Module)

Mobile printing support: KYOCERA Mobile

Print app for iOS and Android, AirPrint, Mopria,

Microsoft Universal Print, Wi-Fi Direct²

CONSUMABLES

Average continuous toner yield in accordance with ISO/IEC 19798

TK-5450K Toner Kit:

Microfine toner black for 4,100 pages A4.

Capacity of starter toner is 1,500 pages A4.

TK-5450C, TK-5450M, TK-5450Y Toner Kit:

Microfine toner cyan, magenta, yellow for 3,200 pages A4

Starter toner cyan, magenta, yellow toner yield 1,500 pages A4

OPTIONS

PF-5110 Paper feeder (max. 1 units):

Max. 250 sheets, 60 – 163 g/m²; A6, A5, A4, custom (105 mm × 148 mm - 216mm × 356mm)

SECURITY

UG-33: ThinPrint support

UG-51: TPM (Trusted Platform Module), additional protection of confidential data

USB IC Card Reader + Card Authentication Kit (B): Support for various authentication keys available

WARRANTY

1-year warranty as standard⁴.

KYOCERA LIFE

Up to 5-year on-site warranty extensions available for product and options.

WHAT'S IN THE BOX:

Main unit, starter toner for 1,500 pages Black, Cyan, Magenta, Yellow, Quick Guide, safety instructions, power supply cord.

DVD with drivers, software and user manual not contain. Computer with internet connection for download the drivers and software required.

¹The device is not designed to achieve the specified volumes in continuous operation.

²Only ECOSYS PA2600cwx

³Optional SD/SDHC memory card is required

⁴Depending on the country

ECOSYS stands for ECOlogy, ECONomy and SYStem printing. With their long-life components, ECOSYS devices are designed to maximise durability and minimise the total cost of ownership with regard to maintenance, administration and consumables. The cartridge-free system means that only the toner has to be replaced regularly. The modular design concept allows you to add workflowenhancing functions as required. Integrated system software provides long-term crossnetwork compatibility. KYOCERA's long-life components cost you and the environment less.



KYOCERA Document Solutions Partner

KYOCERA Document Solutions South Africa

90 Bekker Road, Hertford Office Park, Vorna Valley, Midrand

Tel (011) 595 2600

www.kyoceradocumentsolutions.co.za — info@dza.kyocera.com



* KYOCERA Document Solutions does not warrant that any specifications mentioned will be error-free. Specifications are subject to change without notice. Information is correct at time of going to press. All other brand and product names may be registered trademarks or trademarks of their respective holders and are hereby acknowledged.

kyoceradocumentsolutions.co.za